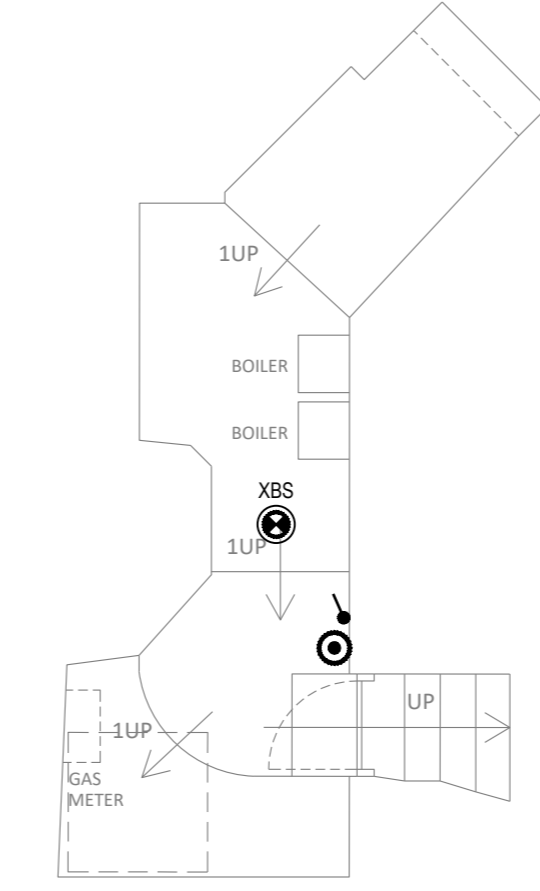


SCHEDULE OF LUMINAIRES	
S1	LED FLOODLIGHT, BLACK FINISH W/ 3 CIRCUIT TRACK ADAPTER, 28W OVAL FLOOD AT HIGH LEVEL, 4000K COLOUR TEMPERATURE, DALI CONTROL. O - DENOTES LUMINAIRE TO DIRECTED AT ORGAN P - DENOTES LUMINAIRE TO DIRECTED AT PULPIT F - DENOTES LUMINAIRE TO DIRECTED AT FONT PI - DENOTES LUMINAIRE TO DIRECTED AT PIANO C - DENOTES LUMINAIRE TO DIRECTED AT CHANCEL A - DENOTES LUMINAIRE TO DIRECTED AT ALTAR CA - DENOTES LUMINAIRE TO DIRECTED AT CHANCEL ARCH
S2	LED FLOODLIGHT, BLACK FINISH W/ 3 CIRCUIT TRACK ADAPTER, 28W OVAL FLOOD AT HIGH LEVEL, 4000K COLOUR TEMPERATURE, DALI CONTROL, POSITIONED TO UP LIGHT CEILING.
S3	AS S2 STYLE BUT WITH LOWER OUTPUT
B1	LED SPOTLIGHT WITH ADJUSTABLE BEAM ANGLE, 2 X COLOUR TEMPERATURE, DALI CONTROL, BLACK FINISH MOUNTED AT HIGH LEVEL ARMED DOWN.
C	SURFACE MOUNTED / RECESSED LED DOWNLIGHT
CE	AS TYPE 'F' BUT FITTED WITH 3 HOUR NON MANTAINED EMERGENCY INTEGRAL BATTERY INVERTER UNIT.
D	LINEAR, 22.5MM, 3000K RIGID LED STRIP TAPE COMPLETE WITH DRIVER
E1	SURFACE MOUNTED BLACK 3 WATT SELF CONTAINED, NON-MANTAINED LED EMERGENCY LUMINAIRE, 3 HOUR DURATION.
E2	HIGH LEVEL, SURFACE MOUNTED BLACK 3 WATT NON-MANTAINED LED EMERGENCY LUMINAIRE, 3 HOUR DURATION.
F	LED WALL LIGHT

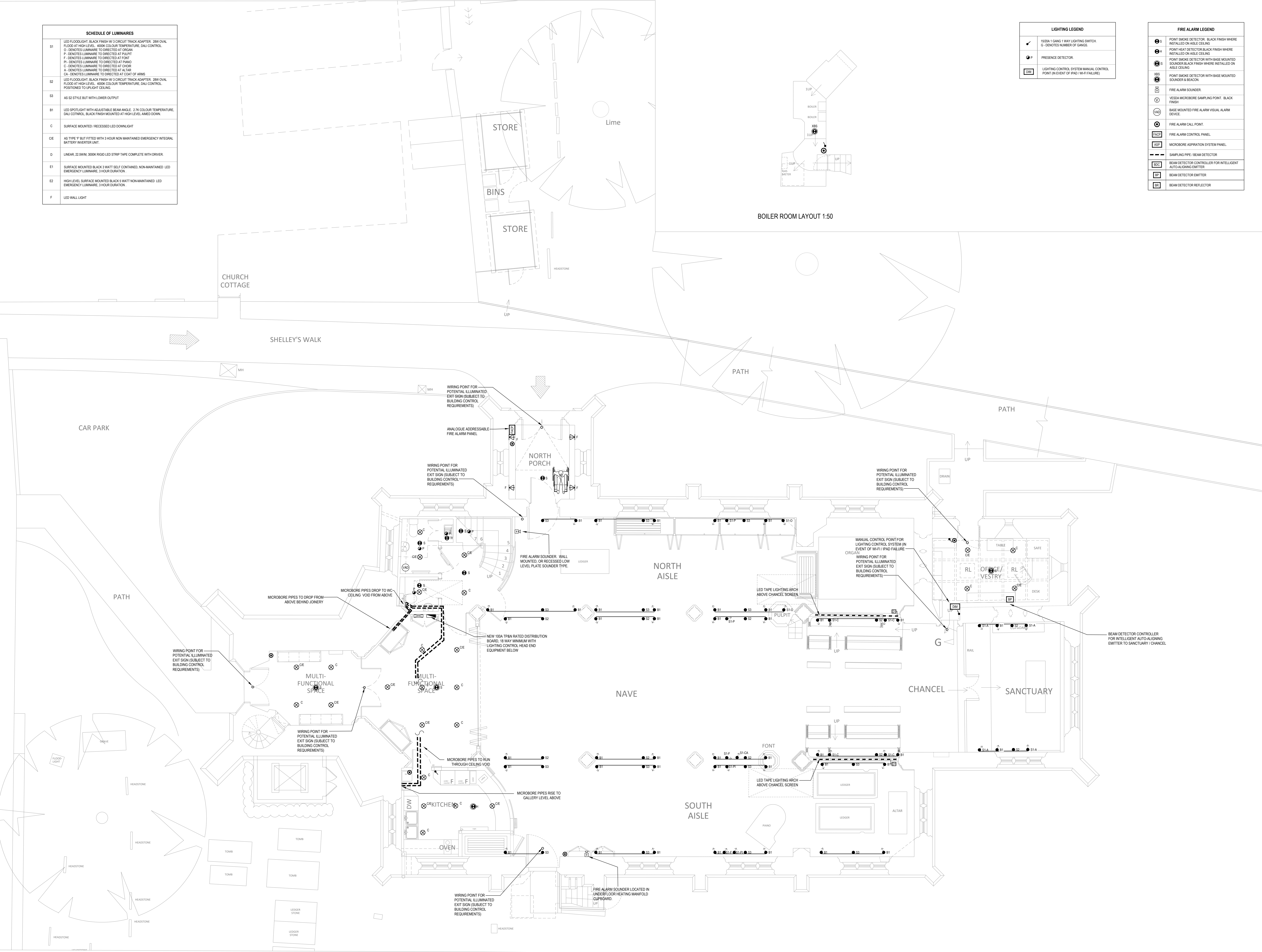
LIGHTING LEGEND	
	1520W 1 GANG 1 WAY LIGHTING SWITCH G - DENOTES NUMBER OF GANGS
	PRESENCE DETECTOR
	LIGHTING CONTROL SYSTEM MANUAL CONTROL POINT (IN EVENT OF PAD W/IFT FAILURE)

FIRE ALARM LEGEND	
	POINT SMOKE DETECTOR, BLACK FINISH WHERE INSTALLED ON ASBESTOCEILING
	POINT HEAT DETECTOR, BLACK FINISH WHERE INSTALLED ON ASBESTOCEILING
	POINT SMOKE DETECTOR WITH BASE MOUNTED SOUNDER, BLACK FINISH WHERE INSTALLED ON ASBESTOCEILING
	POINT SMOKE DETECTOR WITH BASE MOUNTED SOUNDER & BEACON
	FIRE ALARM SOUNDER
	NIEDA MICROBORE SAMPLING POINT, BLACK FINISH
	BASE MOUNTED FIRE ALARM VISUAL ALARM DEVICE
	FIRE ALARM CALL POINT
	FIRE ALARM CONTROL PANEL
	MICROBORE ASPIRATION SYSTEM PANEL
	SAMPLING PIPE / BEAM DETECTOR
	BEAM DETECTOR CONTROLLER FOR INTELLIGENT AUTO-ALIGNING EMITTER
	BEAM DETECTOR EMITTER
	BEAM DETECTOR REFLECTOR

- NOTES**
- THIS DRAWING SHALL BE READ IN CONJUNCTION WITH THE SPECIFICATION FOR ELECTRICAL SERVICES INSTALLATION AND ALL ASSOCIATED ELECTRICAL DRAWINGS LISTED THEREIN.
 - ALL ELECTRICAL SERVICES DRAWINGS SHALL BE READ IN CONJUNCTION WITH ALL ASSOCIATED ARCHITECTURAL, STRUCTURAL, DRAINAGE AND MECHANICAL SERVICES DRAWINGS.
 - THE CONTRACTOR SHALL CHECK AND VERIFY ALL DIMENSIONS ON SITE PRIOR TO COMMENCING CONSTRUCTION.
 - ASBESTOS MAY BE PRESENT IN ANY PART OF THE BUILDING. THE ASBESTOS REGISTER SHOULD BE CONSULTED PRIOR TO ALL WORKS, AND ALL SITE OPERATIVES SHALL BE TRAINED IN ASBESTOS AWARENESS.



BOILER ROOM LAYOUT 1:50



P3	14/10/22	STAGE 3 ISSUE
P2	07/10/22	PRELIMINARY FOR ARCHITECT'S COMMENT
P1	30/09/22	PRELIMINARY FOR ARCHITECT'S COMMENT
REV	DATE	DESCRIPTION



CLIENT	ST LAWRENCE CHURCH PCC		
PROJECT	PROJECT INSPIRE ST LAWRENCE CHURCH LECHLADE		
TITLE	GROUND FLOOR PROPOSED LIGHTING, EMERGENCY LIGHTING AND FIRE ALARM LAYOUT		
DRAWN	KH / IP	SCALE	1:50 @ A0
CHECKED	IP / PQ	DATE	SEP 2022
DRAWING No.	4184 E 01	REVISION	P3